



Flat 8, Beauchamp Gardens Smeeton Road , Kibworth Beauchamp, LE8 0LF £170,000

NO UPWARD CHAIN - OVER 60's DEVELOPMENT

Positioned within the sought-after Beauchamp Gardens development in the heart of Kibworth Beauchamp, this spacious and well-presented two-bedroom first floor apartment offers light, practical accommodation in a secure and well-maintained setting.

The property features a generous living / dining room with French doors opening onto a private south-facing balcony, enjoying pleasant views over the beautifully landscaped communal gardens. A well-proportioned modern fitted kitchen provides a clean, functional space with a contemporary finish.

There are two bedrooms, with the second offering flexibility as a home office or hobby room, alongside a modern bathroom.

The development itself is secure and thoughtfully designed for over 60's living, with a video entry system, well-kept communal areas and attractive gardens providing plenty of outdoor seating and relaxation space. There is also a stair lift providing access to the first floor.

Viewing

Please contact our Berkley Leicester Office on 0116 2544755 if you wish to arrange a viewing appointment for this property or require further information.

 2  1  1  B

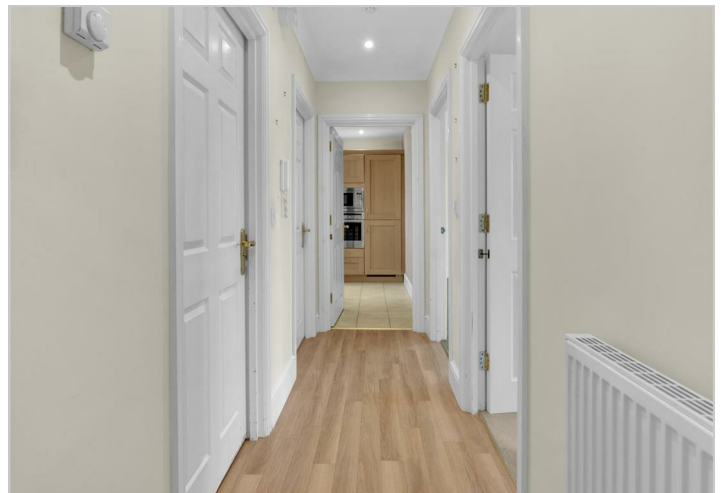
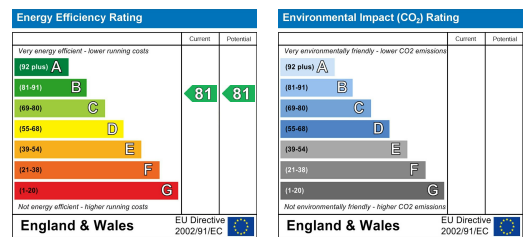
Floor Plan



Area Map



Energy Efficiency Graph



These particulars, whilst believed to be accurate are set out as a general outline only for guidance and do not constitute any part of an offer or contract. Intending purchasers should not rely on them as statements of representation of fact, but must satisfy themselves by inspection or otherwise as to their accuracy. No person in this firm's employment has the authority to make or give any representation or warranty in respect of the property.